



How to add a SIP server

How to register a handset

Contents

Contents	1
Hardware required equipment	2
Software required equipment.....	3
Add server	3
Register handset to base.....	7

Hardware required equipment

This section describes what hardware is needed to execute the guideline. You need the following to perform a registration of a handset to a base station (gateway):

- 1 x base station
- 1 x handset
- 1 x Ethernet cable
- 1 x PC connected to the LAN, VLAN or WAN



Plug the Ethernet cable into the base station and connect the other end of the cable to your network (LAN, VLAN or WAN). The base station is supplied via the Ethernet cable (PoE). PC must be connected to the same network as the base station.

If your network doesn't support PoE (Power over Ethernet), then a PoE adaptor must be used.



Software required equipment

This section describes what software is needed. You will need the following to access the web configuration interface on the base station:

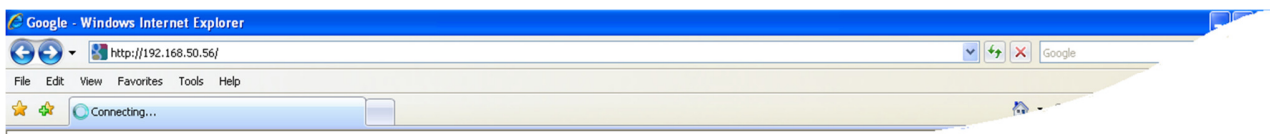
- Windows Internet explorer installed on the PC

Add server

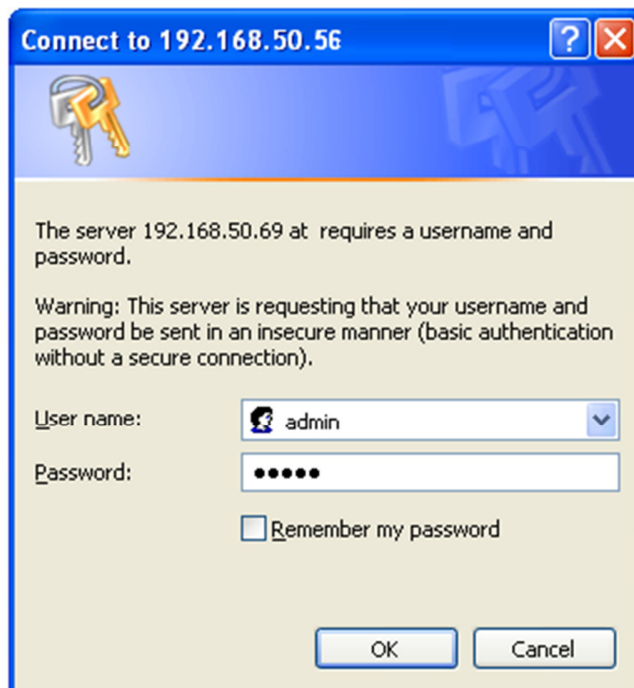
This section describes how to add a SIP server to the base station (gateway).

Step 1: Determine the IP address of the base station

1. Read the MAC address on the labels on the back side of the base station
2. Press “Menu” key on the handset followed by the keys: *47* to get the handset into the base station search mode.
3. Use the cursor down/up to select the base station which match the MAC address read under item 1, and use the IP address listed below the MAC address.
4. Open Windows Internet Explore on the computer and type in the IP address of the base

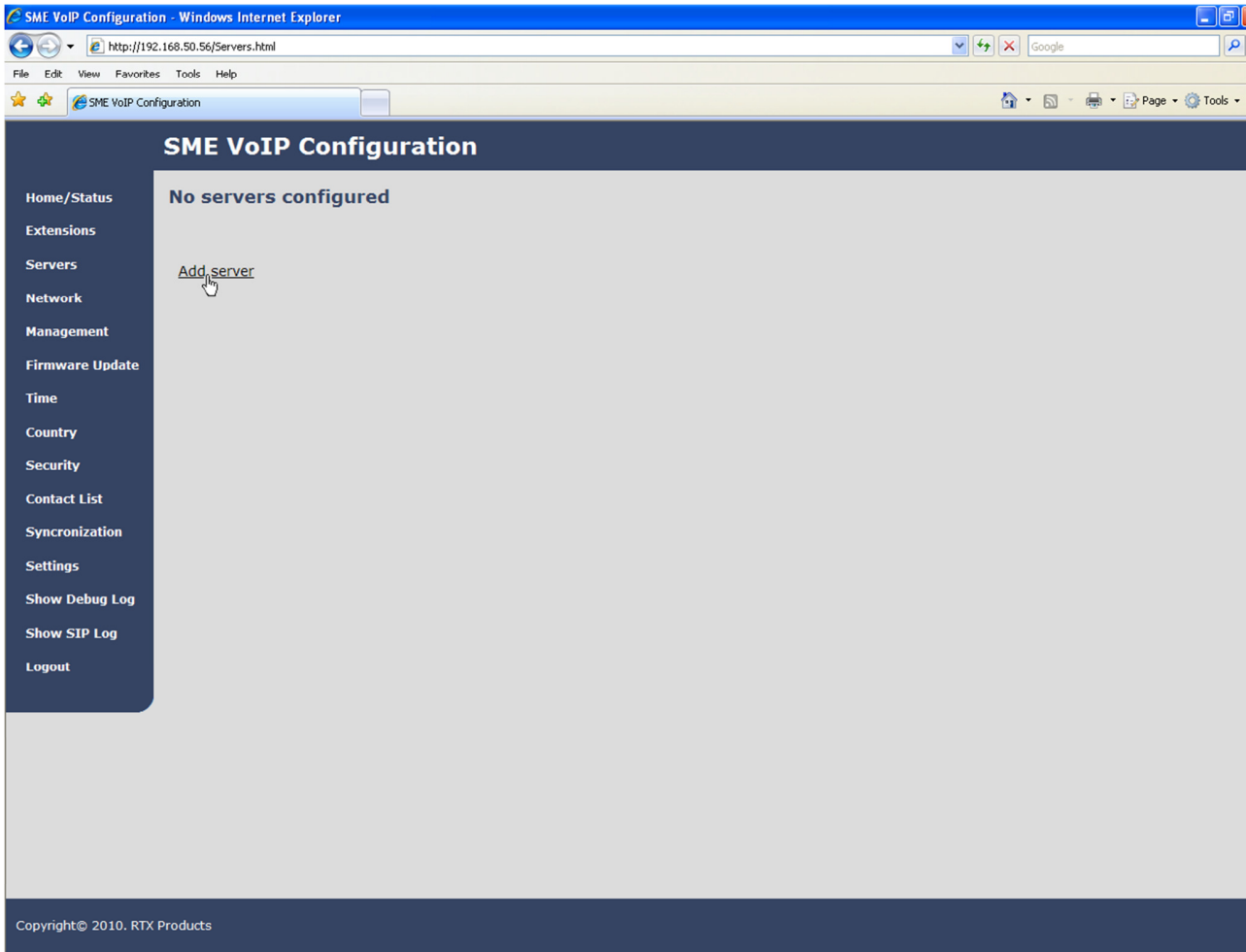


Step 2: Type in the “Username” and “Password” when prompted. The default username and password is “admin”.

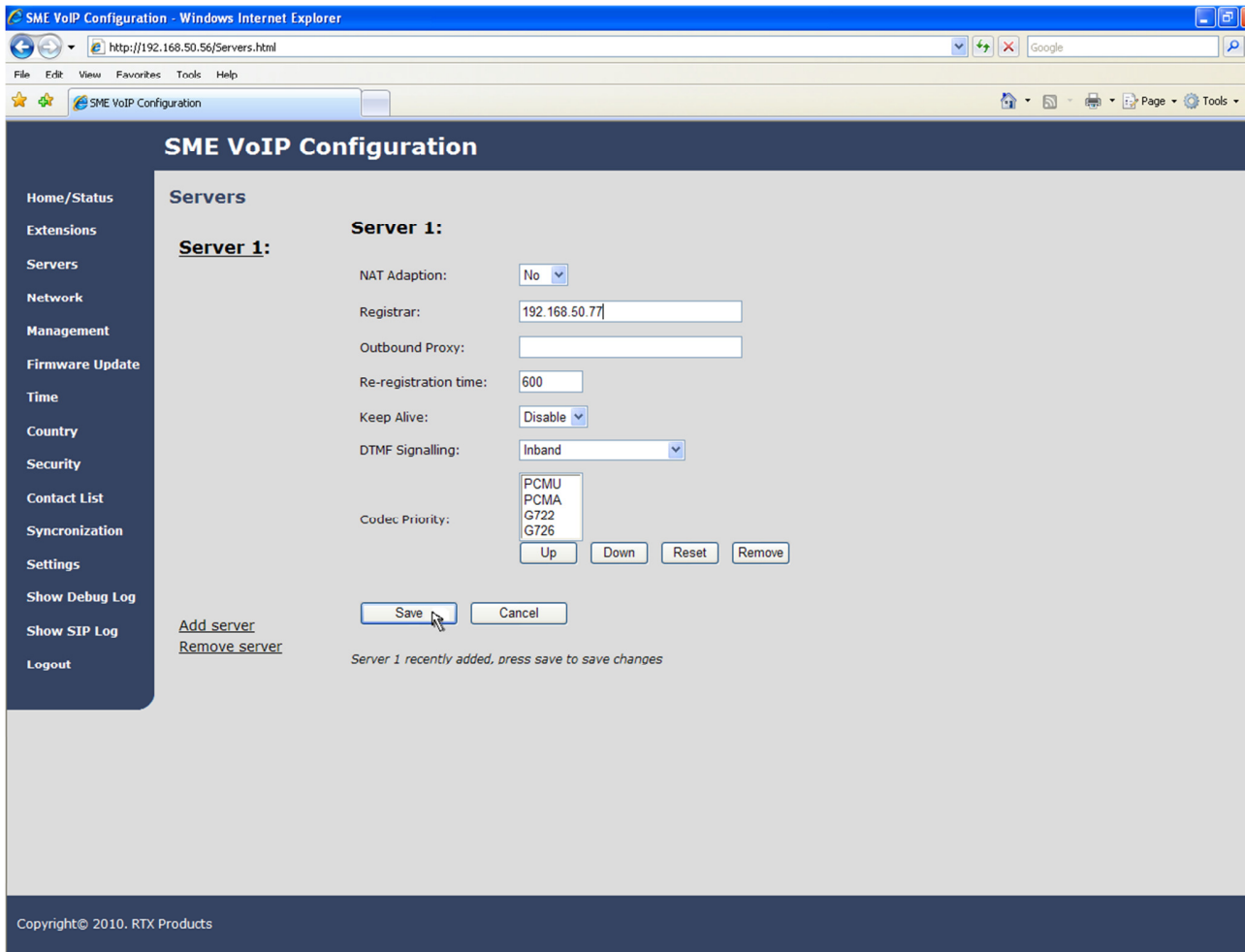




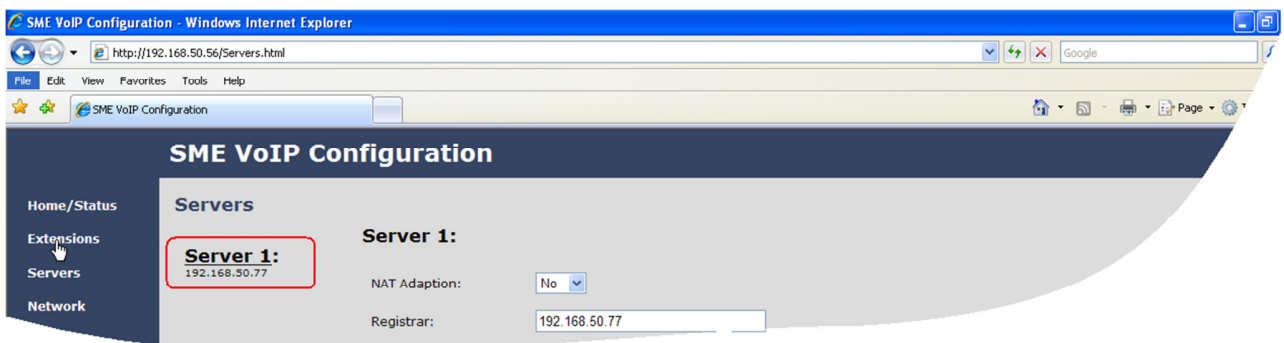
Step 3) A SIP server must be configured on the base before handsets can be registered to the base. To add a SIP server, select sheet "Server" and click the link "Add server".



Step 4) Fill out the displayed form and click “Save”. In the shown example we configure a SIP server located on the IP address 192.168.50.77 and no Outbound proxy is used. Set “NAT adaption” if the base station is located behind a NAT router. It is also possible to type in the URL’s direct, i.e. like “sipphone.com”



Please notice: The new server is displayed to the left when it is successfully saved.



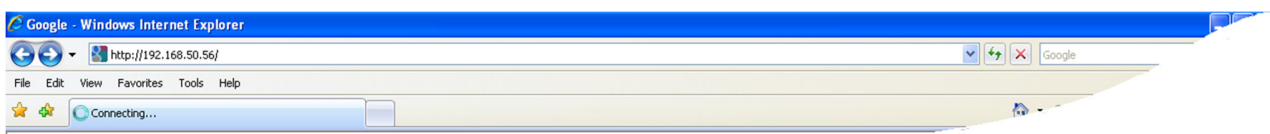


Register handset to base

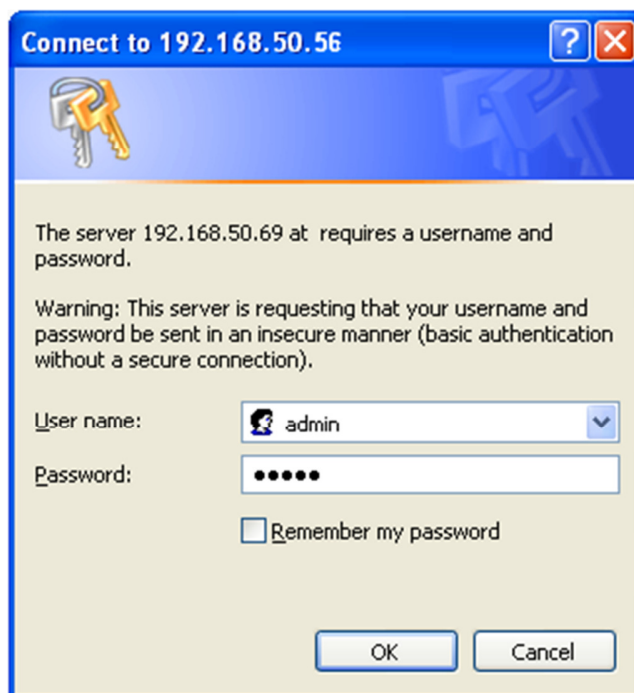
This section describes how to register the wireless handset to the base station.

Please notice: Minimum one SIP server must be registered to the base (system), otherwise a handset cannot be registered to the system. Please see chapter “Add server”.

Step 1: Open Windows Internet Explorer on the computer and type in the IP address of the base. Press “Enter” to access the base.



Step 2: Type in the “Username” and “Password” when prompted. The default username and password is “admin”.





Step 3: Select sheet “Extensions” and click “Add extension”

SME VoIP Configuration

Home/Status
Extensions
Servers
Network
Management
Firmware Update
Time
Country
Security
Contact List
Synchronization
Settings
Show Debug Log
Show SIP Log
Logout

Extensions

Server 1:
192.168.50.77

Idx	Extension	Display Name	IPEI
There are currently no extensions for server 1			

[Add extension](#)

Copyright © 2010. RTX Products



Step 4: Fill out the form and click “Save”. In the example below we add the extension “3020” and this SIP account got the same number as “Authentication User Name” and “Password”. The “Server 1” is selected as server for this extension.

The screenshot shows a web browser window titled "SME VoIP Configuration - Windows Internet Explorer" with the address bar showing "http://192.168.50.56/EditExtension.html?id=0&serverid=0&new=1". The page content is titled "SME VoIP Configuration" and features a sidebar menu on the left with options: Home/Status, Extensions, Servers, Network, Management, Firmware Update, Time, Country, Security, Contact List, Synchronization, Settings, Show Debug Log, Show SIP Log, and Logout. The main content area is titled "Add extension" and contains the following form fields:

- Extension:
- Authentication User Name:
- Authentication Password:
- Display Name:
- Mailbox Name:
- Mailbox Number:
- Server:
- Forwarding Unconditional Number:
- Forwarding No Answer Number: 90 s
- Forwarding on Busy Number:

At the bottom of the form are two buttons: "Save" and "Cancel". A mouse cursor is pointing at the "Save" button.

Copyright © 2010. RTX Products



Step 5: Set a Check mark on the extension which shall be assigned to the handset you want to register and click "Register handset (s)". The base is now open for handset registrations for 5 minutes.

The screenshot shows a web browser window titled "SME VoIP Configuration - Windows Internet Explorer" with the address bar showing "http://192.168.50.56/Ext.html". The page content is titled "SME VoIP Configuration" and features a left-hand navigation menu with options: Home/Status, Extensions, Servers, Network, Management, Firmware Update, Time, Country, Security, Contact List, Synchronization, Settings, Show Debug Log, Show SIP Log, and Logout. The main content area is titled "Extensions" and displays "Server 1: 192.168.50.77". Below this, there is a table with the following data:

	Idx	Extension	Display Name	IPEI
<input checked="" type="checkbox"/>	0	3020	Matthew	FF:FF:FF:FF:FF

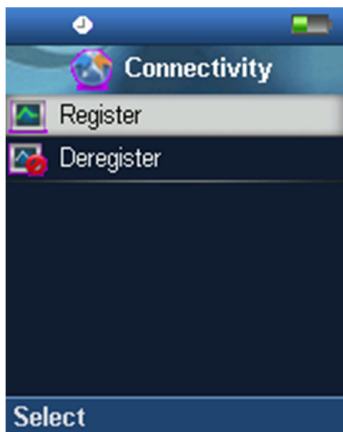
Below the table, there are links for "Check All / Uncheck All" and "With selected: Delete extension(s), Register Handset(s), Deregister Handset(s)". A mouse cursor is pointing at the "Register Handset(s)" link. At the bottom of the main content area, there is a link for "Add extension". The footer of the page reads "Copyright © 2010. RTX Products".

Step 6: Start the registration procedure on the handset by following step “a” to “d” below.

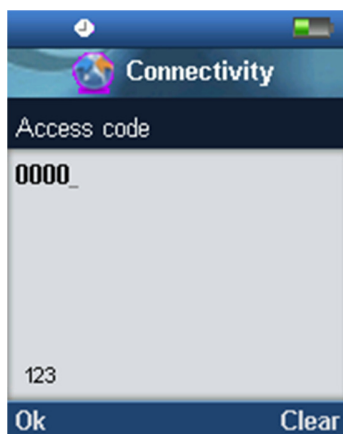
a) Select main menu “Connectivity”



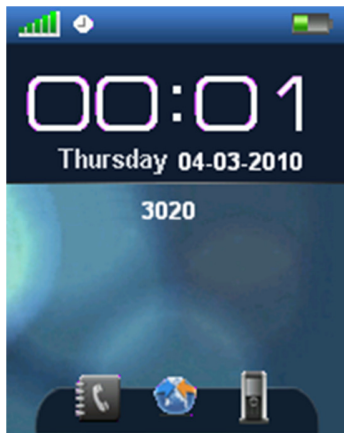
b) Select menu “Register”



c) Type in the “AC code” and press “OK” to start the registration. The default AC code is “0000”.



d) After a while the handset is registered, and the idle display is shown.



Please notice: The unique handset IPEI is displayed on sheet “Extensions” when the handset is successfully registered. The web page must be manually updated by pressing “F5” to see that the handset is registered; otherwise the handset IPEI (International Portable Equipment Identity) isn’t displayed on the web page.

