

# How to Import Contact List to Central Directory

---

## Contents

|   |   |
|---|---|
| Contents.....   | 1 |
| Document History.....   | 1 |
| Introduction: Contact List in Central Directory.....          | 2 |
| Terms & Abbreviations .....                                   | 2 |
| References .....  | 2 |
| Login: SME Configuration Interface.....                       | 3 |
| Central Directory Contact List Structure.....                 | 4 |
| Central Directory Contact List Filename Format .....          | 4 |
| Central Directory (Contact List) Interface.....               | 5 |
| Import Contact List to Central Directory .....                | 5 |
| Verification of Contact List Import to Central Directory..... | 7 |

---

## Document History

| Revision | Author | Issue Date  | Comments                                 |
|----------|--------|-------------|--|
| 0.1      | MYA    | 20-Jun-2010 | Initial Version                          |
| 0.2      | JMG    | 08-Mar-2012 | Central Directory updates                |
| 0.22     | JMG    | 13-Mar-2012 | Step error corrected, xml examples added |
| 0.23     | JMG    | 15-Aug-2012 | Login and contact list stucture update   |
| 0.24     | KME    | 01-Oct-2012 | Limitations described                    |
| 0.25     | IFJ    | 03-Dec-2012 | Central Directory updates                |

---

## Introduction: Contact List in Central Directory

In this document, we describe how to create contact list, download the list to a specific or groups of Base stations and also explain the contact list settings on the SME VoIP configuration Interface.

A Contact list is a collection of names or dictionary of contacts that is usually hosted by the base station(s) so registered handsets can have access them provided they are within the base station coverage area.

It should be noted, that it is possible to create customized contact list on individual handset which is independent from the one uploaded to the base station(s) (that is described fully in a different document).

---

## Terms & Abbreviations

For the purpose of this document, the following abbreviations hold:

|       |                                     |
|-------|-------------------------------------|
| DHCP: | Dynamic Host Configuration Protocol |
| DNS:  | Domain Name Server                  |
| HTTP: | Hyper Text Transfer Protocol        |
| IOS:  | Internetworking Operating System    |
| NAT:  | Network Address Translator          |
| PCMA: | A-law Pulse Code Modulation         |
| PCMU: | mu-law Pulse Code Modulation        |
| SME:  | Small and Medium scale Enterprise   |
| STUN: | Session Traversal Utilities for NAT |

---

## References

- [1]: Multi-cell Setup Description V0.5
- [2]: Base & Handset Firmware Update Description V0.4
- [3]: -

## Login: SME Configuration Interface

- STEP 1** Connect the Base station to a private network via standard Ethernet cable (CAT-5).
- STEP 2** Use the IP find menu in the handset (Menu \* 4 7 \*) to determine the IP-address of the base station by matching the MAC address on the back of the base station with the MAC address list in the handset.
- STEP 3** Type the IP-address into a web browser, on a PC connected to the same subnet as the base station.
- STEP 4** On the Login page, enter your authenticating credentials (i.e. username and password is default "admin"). Click **OK** button.



- STEP 5** Once you have authenticated, the browser will display front end of the SME Configuration Interface. The front end will show relevant information of the base station.

|   |  |   |        |   |              |                        |  |          |    |  |                     |                      |  |                 |                         |  |               |                    |  |              |              |  |             |                |  |                   |                                      |  |               |                            |  |                   |                    |    |                   |                    |    |                   |                    |    |
|---|--|---|--------|---|--------------|------------------------|--|----------|----|--|---------------------|----------------------|--|-----------------|-------------------------|--|---------------|--------------------|--|--------------|--------------|--|-------------|----------------|--|-------------------|--------------------------------------|--|---------------|----------------------------|--|-------------------|--------------------|----|-------------------|--------------------|----|-------------------|--------------------|----|
| <ul style="list-style-type: none"> <li>Home/Status</li> <li>Extensions</li> <li>Servers</li> <li>Network</li> <li>Management</li> <li>Firmware Update</li> <li>Time</li> <li>Country</li> <li>Web Security</li> <li>Central Directory</li> <li>Multi cell</li> <li>Repeaters</li> </ul> | <h3>Welcome</h3> <p><b>System Information:</b></p> <table border="0"> <tr> <td>Phone Type:</td> <td>IPDECT</td> <td><b>Multi cell Ready(Keep-alive) Primary</b></td> </tr> <tr> <td>System Type:</td> <td>Generic SIP (RFC 3261)</td> <td></td> </tr> <tr> <td>RF Band:</td> <td>EU</td> <td></td> </tr> <tr> <td>Current local time:</td> <td>08/Mar/2012 11:14:24</td> <td></td> </tr> <tr> <td>Operation time:</td> <td>1 Days 22:52:40 (H:M:S)</td> <td></td> </tr> <tr> <td>RFPI-Address:</td> <td>1188862D00; RPN:00</td> <td></td> </tr> <tr> <td>MAC-Address:</td> <td>00087b08600f</td> <td></td> </tr> <tr> <td>IP-Address:</td> <td>192.168.11.115</td> <td></td> </tr> <tr> <td>Firmware-Version:</td> <td>IPDECT/02.00/B0002/01-Mar-2012 11:45</td> <td></td> </tr> <tr> <td>Firmware-URL:</td> <td>tftp://10.1.24.101/FwuPath</td> <td></td> </tr> </table> <p><b>SIP Identity Status on this Base Station:</b></p> <table border="0"> <tr> <td>111@192.168.11.99</td> <td>Identity 1 Status:</td> <td>OK</td> </tr> <tr> <td>112@192.168.11.99</td> <td>Identity 2 Status:</td> <td>OK</td> </tr> <tr> <td>113@192.168.11.99</td> <td>Identity 3 Status:</td> <td>OK</td> </tr> </table> <p>Press button to reboot.</p> <div style="display: flex; justify-content: space-around;"> <input type="button" value="Reboot"/> <input type="button" value="Forced Reboot"/> </div> | Phone Type:                                 | IPDECT | <b>Multi cell Ready(Keep-alive) Primary</b> | System Type: | Generic SIP (RFC 3261) |  | RF Band: | EU |  | Current local time: | 08/Mar/2012 11:14:24 |  | Operation time: | 1 Days 22:52:40 (H:M:S) |  | RFPI-Address: | 1188862D00; RPN:00 |  | MAC-Address: | 00087b08600f |  | IP-Address: | 192.168.11.115 |  | Firmware-Version: | IPDECT/02.00/B0002/01-Mar-2012 11:45 |  | Firmware-URL: | tftp://10.1.24.101/FwuPath |  | 111@192.168.11.99 | Identity 1 Status: | OK | 112@192.168.11.99 | Identity 2 Status: | OK | 113@192.168.11.99 | Identity 3 Status: | OK |
| Phone Type:   | IPDECT   | <b>Multi cell Ready(Keep-alive) Primary</b> |        |   |              |                        |  |          |    |  |                     |                      |  |                 |                         |  |               |                    |  |              |              |  |             |                |  |                   |                                      |  |               |                            |  |                   |                    |    |                   |                    |    |                   |                    |    |
| System Type:  | Generic SIP (RFC 3261)   |   |        |   |              |                        |  |          |    |  |                     |                      |  |                 |                         |  |               |                    |  |              |              |  |             |                |  |                   |                                      |  |               |                            |  |                   |                    |    |                   |                    |    |                   |                    |    |
| RF Band:  | EU   |   |        |   |              |                        |  |          |    |  |                     |                      |  |                 |                         |  |               |                    |  |              |              |  |             |                |  |                   |                                      |  |               |                            |  |                   |                    |    |                   |                    |    |                   |                    |    |
| Current local time:   | 08/Mar/2012 11:14:24   |   |        |   |              |                        |  |          |    |  |                     |                      |  |                 |                         |  |               |                    |  |              |              |  |             |                |  |                   |                                      |  |               |                            |  |                   |                    |    |                   |                    |    |                   |                    |    |
| Operation time:   | 1 Days 22:52:40 (H:M:S)  |   |        |   |              |                        |  |          |    |  |                     |                      |  |                 |                         |  |               |                    |  |              |              |  |             |                |  |                   |                                      |  |               |                            |  |                   |                    |    |                   |                    |    |                   |                    |    |
| RFPI-Address:   | 1188862D00; RPN:00   |   |        |   |              |                        |  |          |    |  |                     |                      |  |                 |                         |  |               |                    |  |              |              |  |             |                |  |                   |                                      |  |               |                            |  |                   |                    |    |                   |                    |    |                   |                    |    |
| MAC-Address:  | 00087b08600f   |   |        |   |              |                        |  |          |    |  |                     |                      |  |                 |                         |  |               |                    |  |              |              |  |             |                |  |                   |                                      |  |               |                            |  |                   |                    |    |                   |                    |    |                   |                    |    |
| IP-Address:   | 192.168.11.115   |   |        |   |              |                        |  |          |    |  |                     |                      |  |                 |                         |  |               |                    |  |              |              |  |             |                |  |                   |                                      |  |               |                            |  |                   |                    |    |                   |                    |    |                   |                    |    |
| Firmware-Version:   | IPDECT/02.00/B0002/01-Mar-2012 11:45   |   |        |   |              |                        |  |          |    |  |                     |                      |  |                 |                         |  |               |                    |  |              |              |  |             |                |  |                   |                                      |  |               |                            |  |                   |                    |    |                   |                    |    |                   |                    |    |
| Firmware-URL:   | tftp://10.1.24.101/FwuPath   |   |        |   |              |                        |  |          |    |  |                     |                      |  |                 |                         |  |               |                    |  |              |              |  |             |                |  |                   |                                      |  |               |                            |  |                   |                    |    |                   |                    |    |                   |                    |    |
| 111@192.168.11.99   | Identity 1 Status:   | OK  |        |   |              |                        |  |          |    |  |                     |                      |  |                 |                         |  |               |                    |  |              |              |  |             |                |  |                   |                                      |  |               |                            |  |                   |                    |    |                   |                    |    |                   |                    |    |
| 112@192.168.11.99   | Identity 2 Status:   | OK  |        |   |              |                        |  |          |    |  |                     |                      |  |                 |                         |  |               |                    |  |              |              |  |             |                |  |                   |                                      |  |               |                            |  |                   |                    |    |                   |                    |    |                   |                    |    |
| 113@192.168.11.99   | Identity 3 Status:   | OK  |        |   |              |                        |  |          |    |  |                     |                      |  |                 |                         |  |               |                    |  |              |              |  |             |                |  |                   |                                      |  |               |                            |  |                   |                    |    |                   |                    |    |                   |                    |    |

---

## Central Directory Contact List Structure

The structure of Contact List is simple. The figure below shows an example of structure of Contact List in Text format and in Xml format. **Contact name must not contain more than 23 characters and contact number must not contain more than 21 digits.**

### .csv or .txt

```
File Edit Format View Help
Dennis Iversen,+4596322382
Torsten Krogh Elgaard,2381
Rune Thor Jensen,2445
Maija-Liisa Knudsen,2377
Jesper Jensen,2346
Kristian Kjaer,2447
Gitte Dyhr Petersen,2470
Sukesh Reddy,2749
Morten Fredegod,4726
Annemarie Dahl,2861
Hans Back,2721
Henrik Olsen,2733
Jens Martin Jensen,2782
Kenneth Skiveren,2363
Lars Christensen (RTX),2433
```

### .xml

```
File Edit Format View Help
<IPPhoneDirectory>
<DirectoryEntry>
<Name>Mark Ross</Name>
<Telephone>100</Telephone>
<Office>+450123456789</Office>
<Mobile>+451123456789</Mobile>
<Fax>+452123456789</Fax>
</DirectoryEntry>
</IPPhoneDirectory>
```

### Txt file limitations:

- Contact name must NOT be longer than 23 characters (name will be truncated)
- Contact name must NOT contain “,”
- Contact number must be limited to 21 digits (entry will be discarded, no warning)
- Contact number digits must be: +0123456789
- Contact number does not support SIP-URI
- Spaces between name section “,” and number section is not supported

---

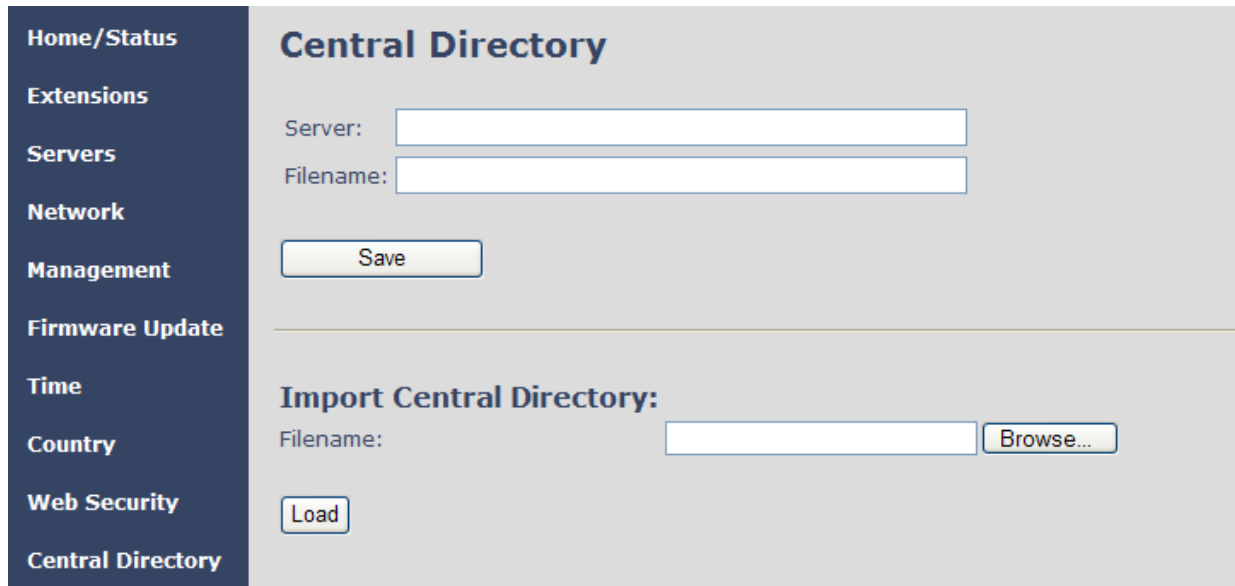
## Central Directory Contact List Filename Format

The Contact list is saved as file format: .txt .csv or .xml

---

## Central Directory (Contact List) Interface

**STEP 6** On the **SME VoIP Configuration** Interface > scroll down and on the left column, click on **Central Directory** url link.



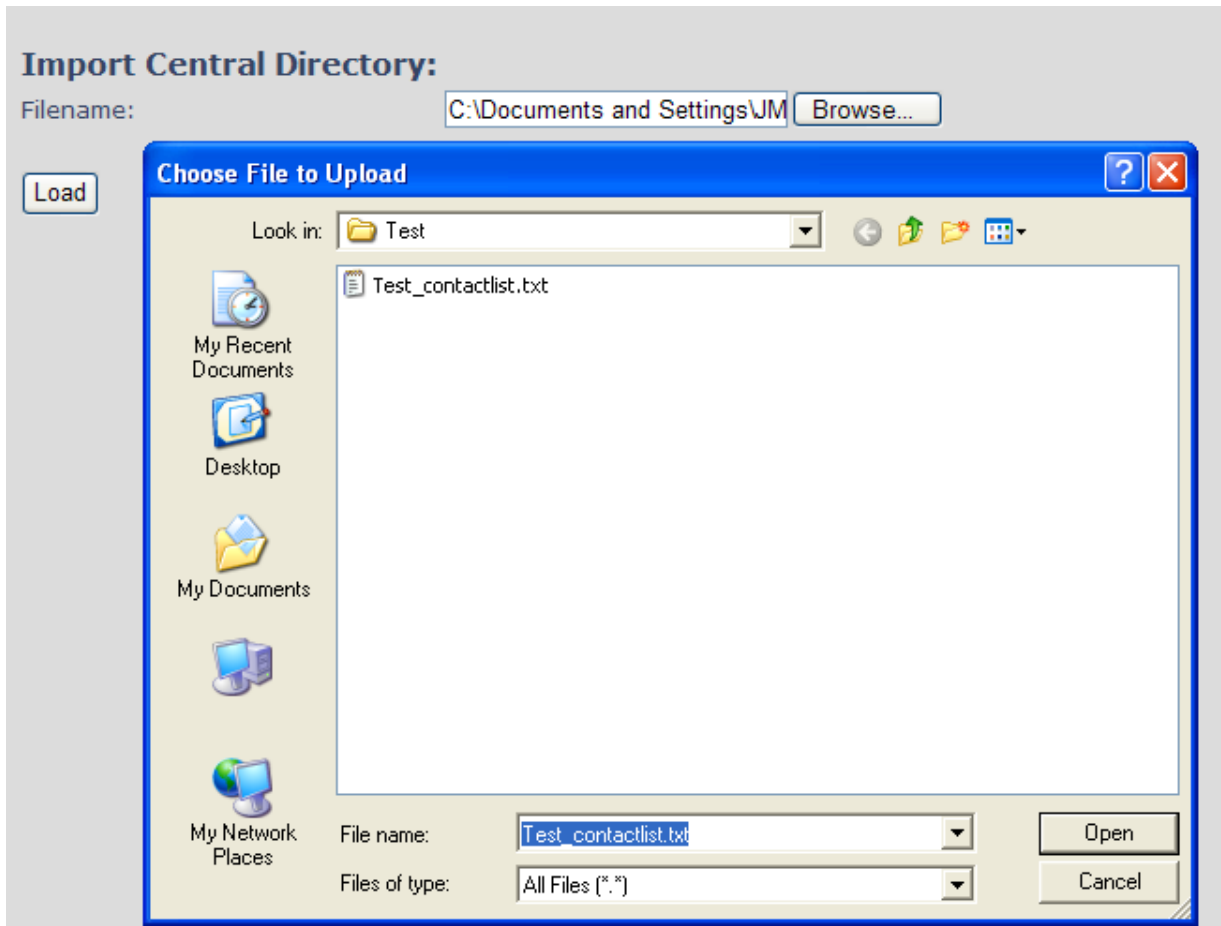
The screenshot shows the 'Central Directory' configuration page. On the left is a dark blue sidebar with menu items: Home/Status, Extensions, Servers, Network, Management, Firmware Update, Time, Country, Web Security, and Central Directory (highlighted). The main content area has a title 'Central Directory' and two sections. The first section has 'Server:' and 'Filename:' text labels followed by empty input boxes, and a 'Save' button below. The second section is titled 'Import Central Directory:' and has a 'Filename:' text label followed by an empty input box and a 'Browse...' button. Below this is a 'Load' button.

---

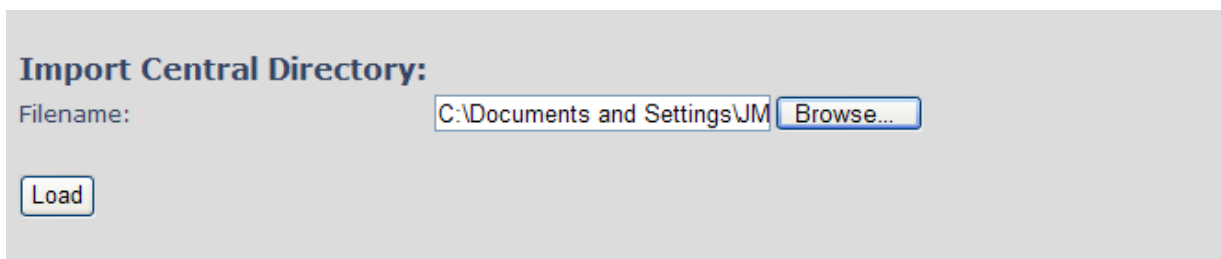
## Import Contact List to Central Directory

**STEP 7** On the **Central Directory** page, the admin should click on **Browse** button and the **Choose File to Load** dialog window will be shown.

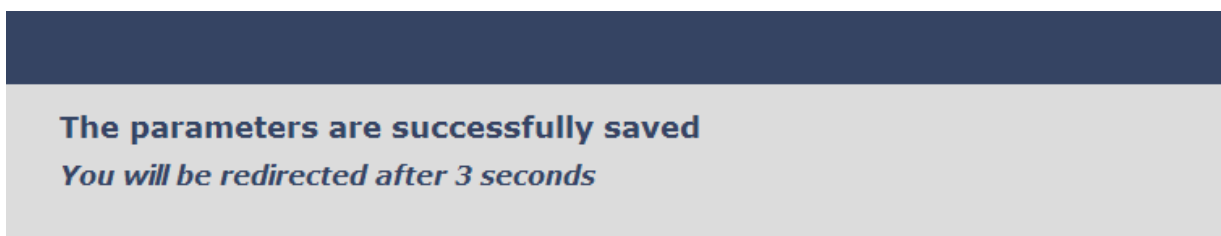
**STEP 8** On the **Choose File to Upload** dialog window, navigate to the directory or folder that contains the right file to be imported to the base station > Click on **Open** button.



Next, click on the **Load** button. This will import the contents of contacts in the selected file into the relevant Base station.



The figure below shows the import procedure is in process.



Alternative way to import a Contact List is to get it from a server. First click on Management url to get Management Settings page, then select the protocol of your server (TFTP/HTTP) in Management Transfer Protocol, then save the setting by clicking Save.

|                                |      |
|--------------------------------|------|
| Management Transfer Protocol:  | TFTP |
| HTTP Management upload script: | TFTP |
| HTTP Management password:      | HTTP |

Go back to Central Directory page and enter Server IP address (inclusive the path in the end of the address) and Filename of the contact list, then save the setting by clicking Save. (See example below).

### Central Directory

Server:

Filename:

Then reboot the Base station to ensure that the changes take effect.

---

## Verification of Contact List Import to Central Directory

On the Handset, navigate to Central Directory where the correct contact list should populate to the contacts uploaded to the Base station.