

ADSL2/2+ Router

Upgrade Firmware via Web

Reset to Default Setting

- Reset to default setting first

HOME EZ SETUP CONFIG ADVANCED **TOOLS** STATUS

System Commands

System Commands allow you to carry out basic system actions. Press the button to execute a command.

Restart

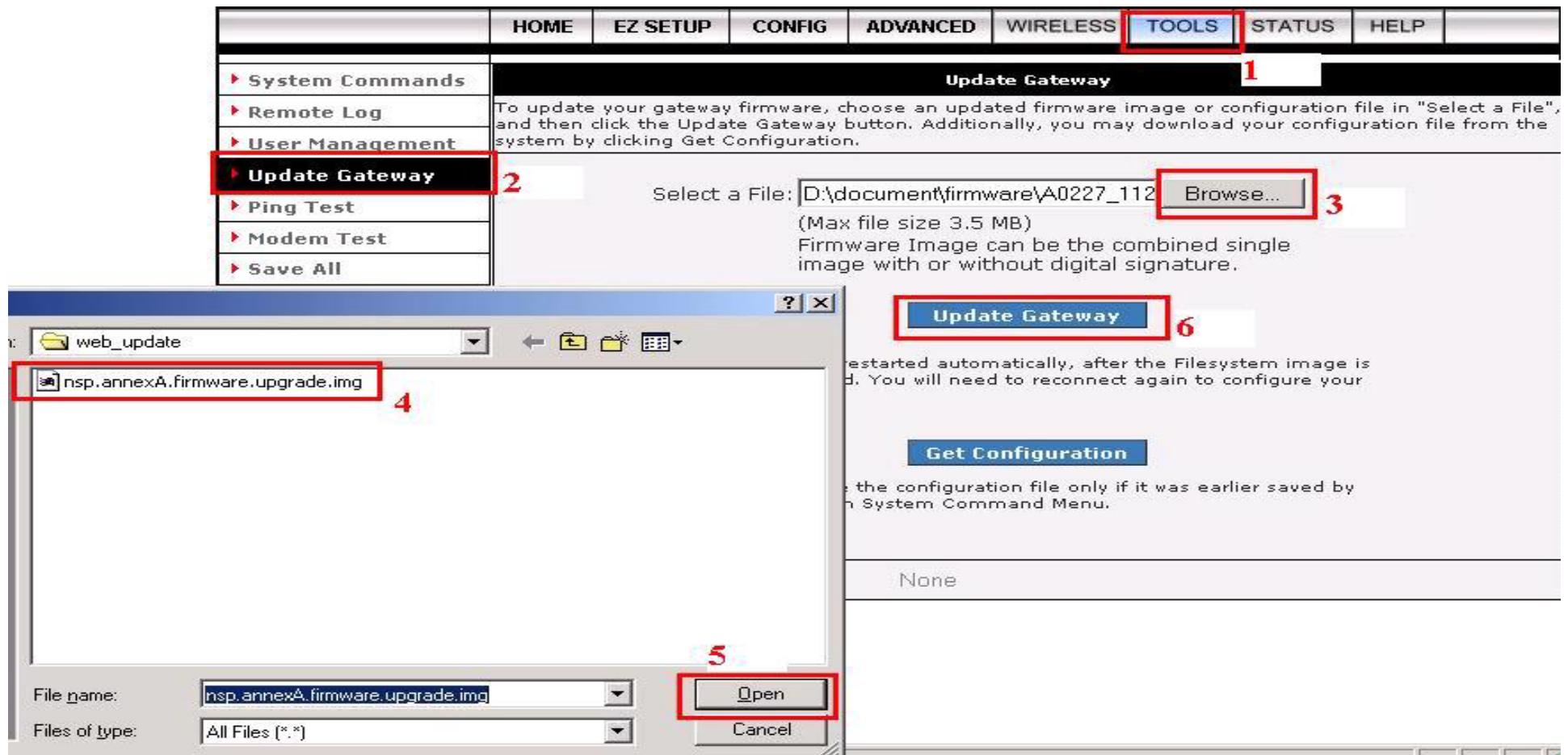
Use this button to restart the system. If you have not saved your configurations, the Gateway will revert back to the previously saved configuration upon restarting. NOTE: Connectivity to the unit will be lost. You can reconnect after the unit reboots.

Restore Defaults

Use this button to restore factory default configuration. NOTE: Connectivity to the unit will be lost. You can reconnect after the unit reboots.

Upgrade Firmware

- Upgrade Firmware via web page
- Select Firmware, file name should be “nsp.annexA.firmware.upgrade.img” or “nsp.annexB.firmware.upgrade.img”



Upgrade Firmware

- Upgrading will take about 3~4 mins and show this page
- Ping 192.168.1.1, if the ping get “Request time out” for a while, means upgrading firmware is successful and router is rebooting
- Done !

