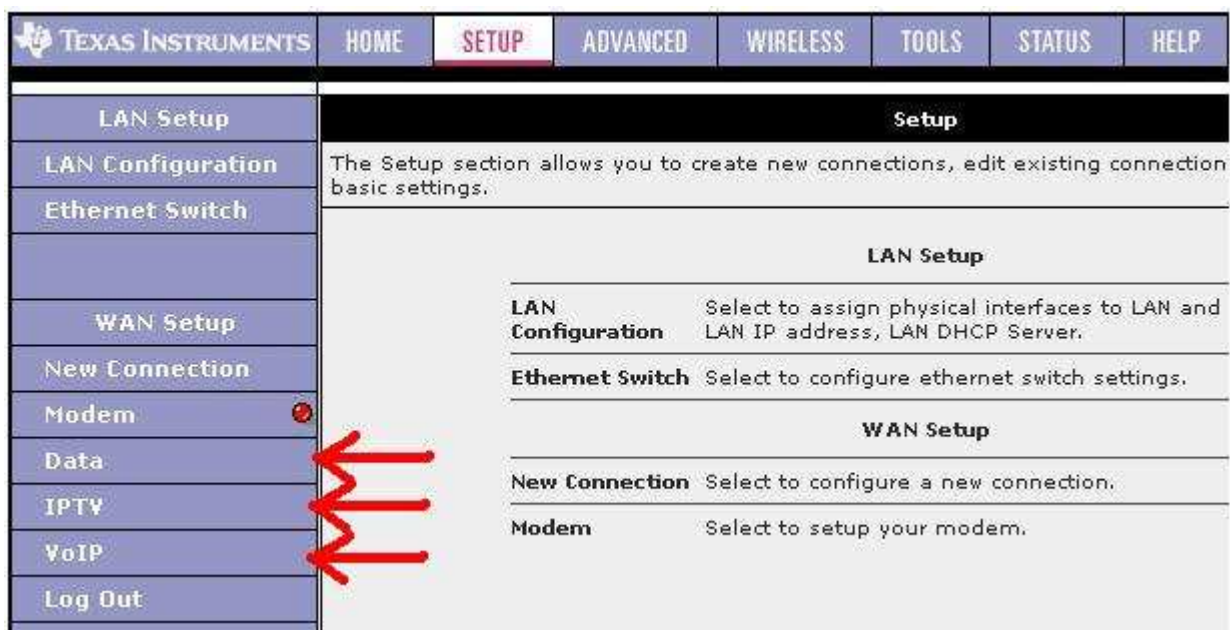
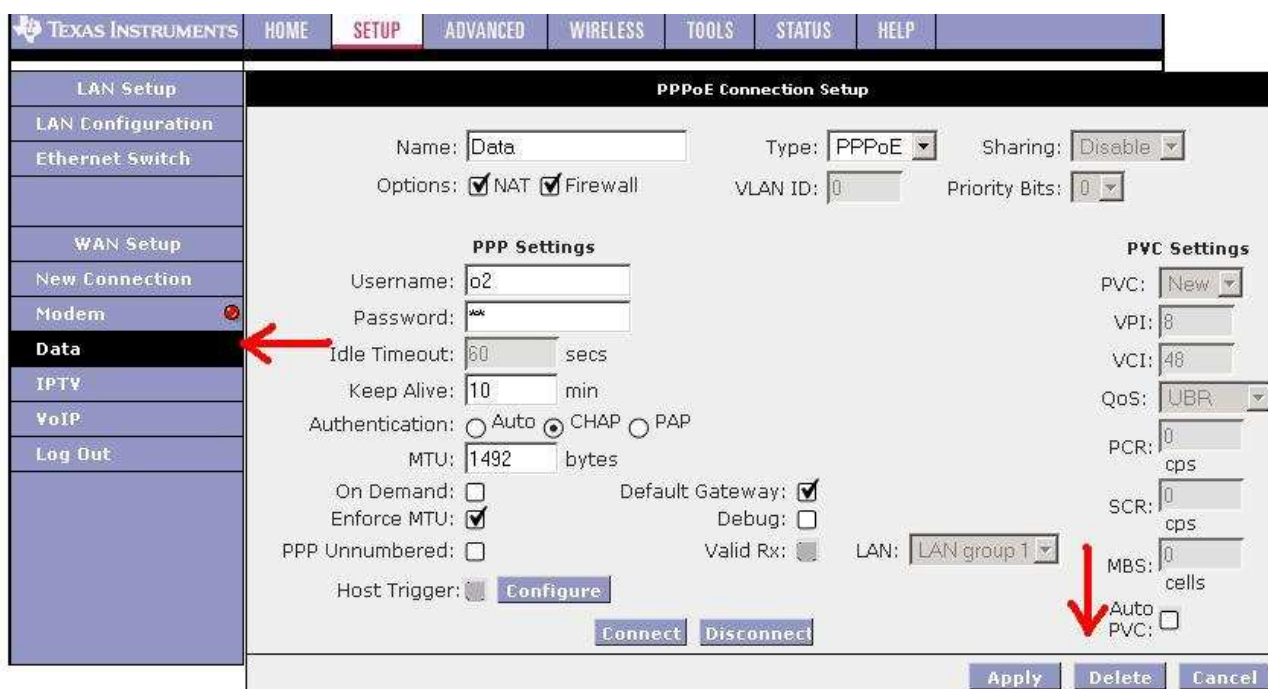


Návod na nastavenie WELL PTI-1605G pre Slovensko

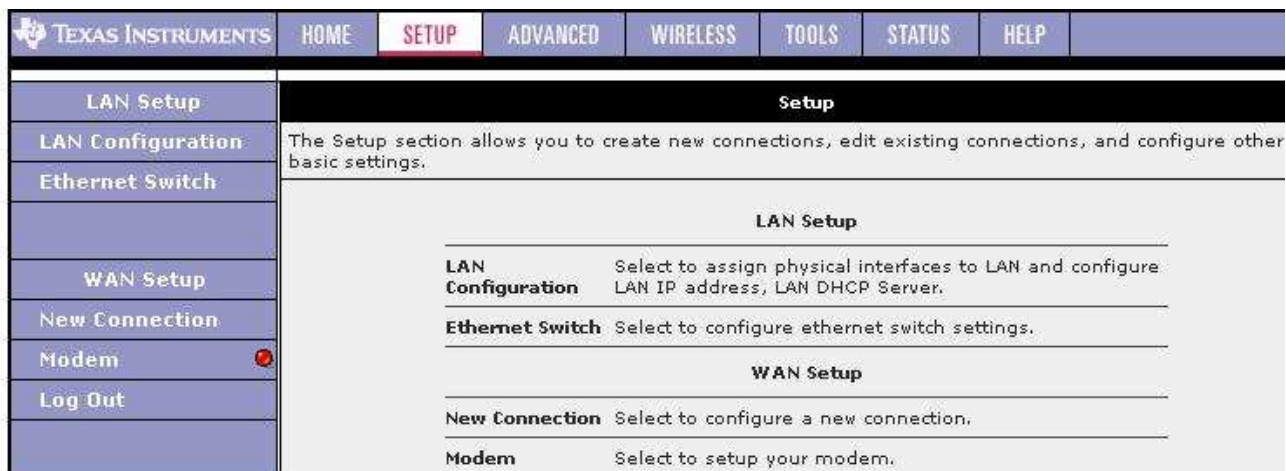
V hlavnom menu kliknite na položku „SETUP“



V ľavom rohu sú tri položky, ktoré je treba odstrániť „Data, IPTV, VoIP“. Kliknite na položku Data, po načítaní stránky kliknite na tlačítko „Delete“ rovnakým spôsobom pokračujte aj u položiek „IPTV a VoIP“



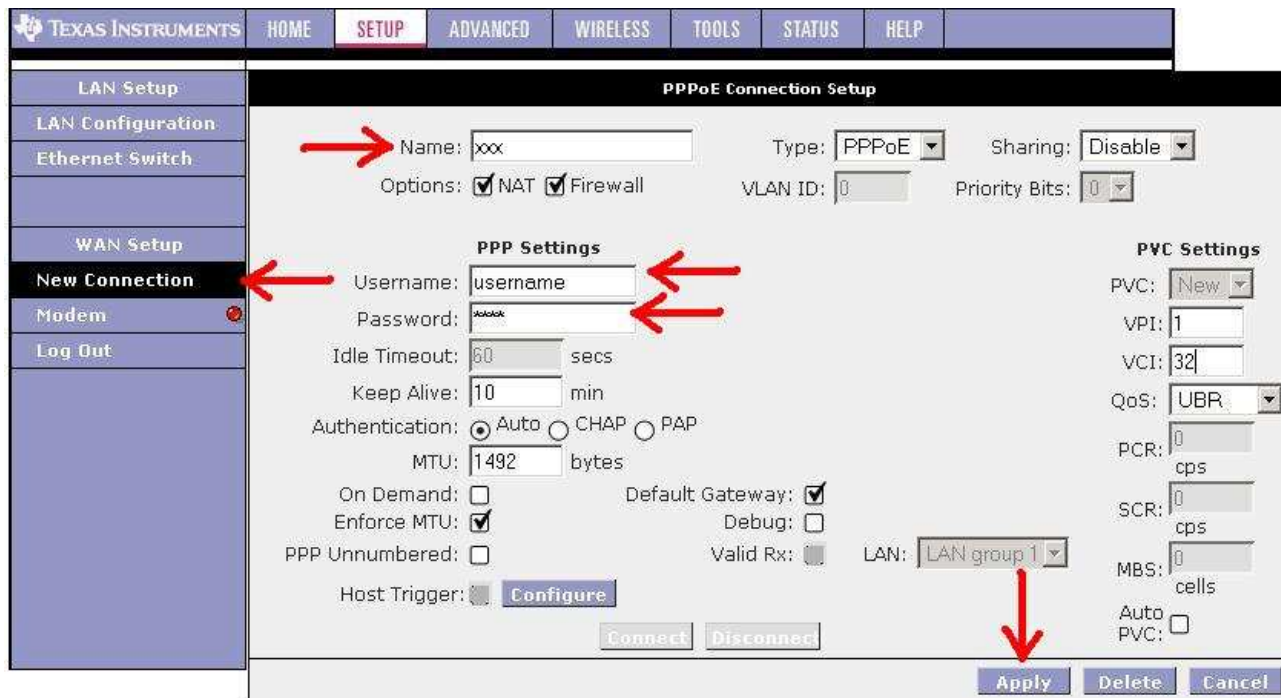
Takto by mala vyzerat' stránka po predchádzajúcich krokoch. Nie sú tam položky „Data,IPTV a VoIP“



The screenshot shows the 'SETUP' menu of a Texas Instruments device. The left sidebar contains the following options: LAN Setup, LAN Configuration, Ethernet Switch, WAN Setup, New Connection, Modem, and Log Out. The main content area is titled 'Setup' and contains a description: 'The Setup section allows you to create new connections, edit existing connections, and configure other basic settings.' Below this, there are three sections: 'LAN Setup' with 'LAN Configuration' (Select to assign physical interfaces to LAN and configure LAN IP address, LAN DHCP Server.) and 'Ethernet Switch' (Select to configure ethernet switch settings.); 'WAN Setup' with 'New Connection' (Select to configure a new connection.) and 'Modem' (Select to setup your modem.); and 'Log Out'.


Kliknite na položku „New Connection“ vedľa položky „Name:“ zadajte meno adsl.


Do ďalšej položky „Username“ zadajte svoje užívateľské meno a do „Password“ Vaše heslo dodane poskytovateľom pripojenia. Do VPI vložte „1“ a do VCI vložte „32“ Potom kliknite na tlačidlo „Apply“



The screenshot shows the 'PPPoE Connection Setup' form. The left sidebar is the same as the previous screenshot, but 'New Connection' is now selected. The main content area is titled 'PPPoE Connection Setup' and contains the following fields and options: 'Name' (xxx), 'Type' (PPPoE), 'Sharing' (Disable), 'Options' (NAT, Firewall), 'VLAN ID' (0), 'Priority Bits' (0), 'PPP Settings' (Username: username, Password: [redacted], Idle Timeout: 60 secs, Keep Alive: 10 min, Authentication: Auto, MTU: 1492 bytes, On Demand: [unchecked], Enforce MTU: [checked], PPP Unnumbered: [unchecked], Host Trigger: [unchecked], Default Gateway: [checked], Debug: [unchecked], Valid Rx: [unchecked], LAN: LAN group 1), 'PVC Settings' (PVC: New, VPI: 1, VCI: 32, QoS: UBR, PCR: 0 cps, SCR: 0 cps, MBS: 0 cells, Auto PVC: [unchecked]), and buttons 'Connect', 'Disconnect', 'Apply', 'Delete', and 'Cancel'. Red arrows point to the 'Name' field, the 'New Connection' option in the sidebar, the 'Username' field, the 'Password' field, the 'VPI' field, the 'VCI' field, and the 'Apply' button.

Na záver kliknite na položku „Tools“ potom na „Save All“

 TEXAS INSTRUMENTS	HOME	SETUP	ADVANCED	WIRELESS	TOOLS	STATUS	HELP
---	------	-------	----------	----------	--------------	--------	------

System Commands	System Commands
Remote Log - Router	System Commands allow you to carry out basic system actions. Press the button to execute a command.
Remote Log - Voice	
User Management	
Update Gateway	 Save All Press this button in order to permanently save the current configuration of the Gateway. If you do restart the system without saving your configuration, the Gateway will revert back to the previously saved configuration.
Ping Test	
Modem Test	Restart Use this button to restart the system. If you have not saved your configurations, the Gateway will revert back to the previously saved configuration upon restarting. NOTE: Connectivity to the unit will be lost. You can reconnect after the unit reboots.
Log Out	Restart Access Point Use this button to restart the Wireless Access Point. It is important to Restart Access Point any time you change your Wireless settings.
	Restore Defaults Use this button to restore factory default configuration. NOTE: Connectivity to the unit will be lost. You can reconnect after the unit reboots.